

- Reduces risk of accidental displacement of catheter
- Reduces risk of catheter being expelled by the body
- Safe anchoring and protection of catheter
- Smooth profile for optimum patient comfort
- Hydrocolloid carrier absorbs exudate from puncture site
- Prevents contamination of puncture site from environment
- Can prevent kinking of catheter
- Standardized anchoring of catheter

## Pleura-Guard <sup>8161</sup>

*Anchoring device for thoracic drainage catheters*

## Pleura-Guard

### Secure anchoring of Thoracic Drainage Catheters

Pleura-Guard is an anchoring device for thoracic drainage catheters from 16 French to 30 French.

The device consists of a skin-side surface with a skin friendly hydrocolloid adhesive combined with a specially designed foam block which can prevent kinking of the catheter. A non-woven lid provides an effective securing of the catheter on the foam block.

In addition catheters are prevented from being expelled by the body and the secure anchoring of the catheter also prevents catheter movements from enlarging the catheter exit site, which is why less leakage is experienced. The catheter exit site is covered by a transparent hydrocolloid lid protecting the puncture site from contamination while allowing continuous monitoring of the puncture site.

The hydrocolloid used for the carrier and the puncture site lid absorbs exudates and thus prevents skin maceration and excessive growth of micro-organisms.

Finally, the use of suture for anchoring of the catheter may be omitted in most cases and the slim design of the Pleura-Guard allows the anchoring of two catheters positioned at a short distance.

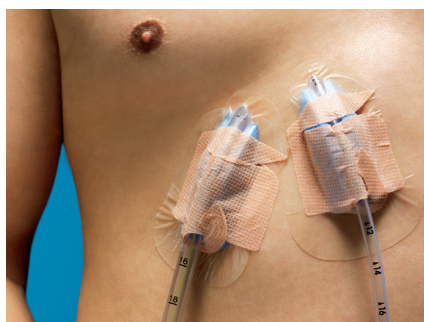
### Patient friendly fixation

The low and slim design of the Pleura-Guard often replaces bulky "home-made" fixations of gauze combined with non-woven dressings or the like. Further, the possibility of omitting the suture makes the Pleura-Guard more comfortable for the patient and the safe anchoring enhances the patient's feeling of greater freedom to move around without worrying about the catheter.

The effective absorption of exudates combined with secure anchoring and the possibility to monitor the puncture site area can reduce the need for dressing changes.

### Easy to use

Pleura-Guard is easy and fast to apply to the patient's skin and results in a standardized and safe anchoring and protection of the thoracic drainage catheter.



*The slim design of the Pleura-Guard enables fixation of two drainage tubes near each other.*

### Ordering information:

Pleura-Guard **CE**  
**0459**

REF.	Product	Packing
8161	<b>Pleura-Guard</b> - Anchoring device for thoracic drainage catheters from 16-30 french.	1 pc in peel-pouch, sterile 25 pcs per Box

### Distributor:

EN ISO 13485:2016  
Quality Management System

©2020 Copenhagen MedLab ApS. All rights reserved.

Copenhagen MedLab ApS

• Formervangen 5  
DK-2600 Glostrup  
Danemark

• Tel.: +45 43 29 66 88  
Fax: +45 43 29 66 77

• info@copenhagen-medlab.com